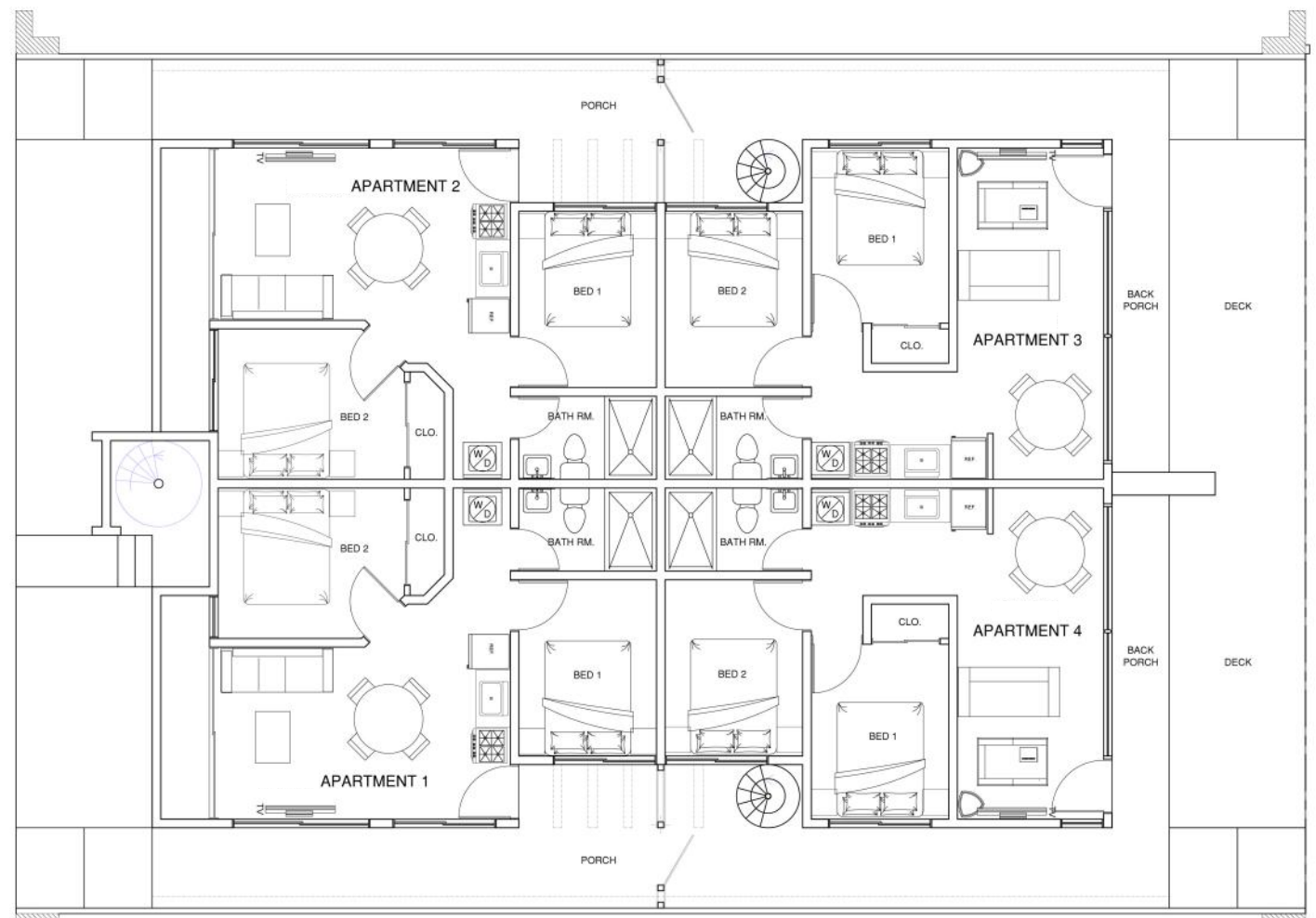


2-Bedroom/1-Bath Contemporary Condo

500 ft²—Interior Living Area, 360 ft² Roof-Top Sky Lounge) = 860 Total Ft²

3M Impact Glass (High-Security) Windows
Polished Travertine Floors
Granite CounterTops
Contemporary Italian Glass Kitchen Cabinetry
LED Lighting

Private Roof-Top Living Area for each Condo Owner.
Single-Story Four-Plex Design
Designated Parking Space for each Condo Owner.
Professionally Landscaped.
Professional Rental Management.



GROUND FLOOR PLAN
Scale: 3/16" = 1'-0"

Only \$140,000 USD, or... \$179,000 USD with a Private (Deeded) Boat Slip

Staged Payment Schedule

- \$1,000 US Reservation Deposit
- 10% @ Signing of Sale Contract
- 20% @ Ground Breaking
- 10% @ Completion of Foundation
Pilings & Ground Beams
- 10% @ Ground Floor Walls Up
- 15% @ Completion of Rough Cement
Structure/Roof Poured
- 15% @ Finish Plaster—Interior/Exterior
Doors / Windows Installed. All
Flooring Installed
- 10% @ Kitchen Cabinets, Counter
Tops, Vanities, and Fixtures
- 10% - Due at Completion.

Completion of Condo will be approx. 9-12 months from start of construction.

All dates are approximate and delays in Belize are common!

* Bldg.'s 1 & 3 have completed Foundation Pilings & Ground Beams (40% Due at Signing.)



Only \$140,000 USD, or... \$179,000 USD with a Private (Deeded) Boat Slip