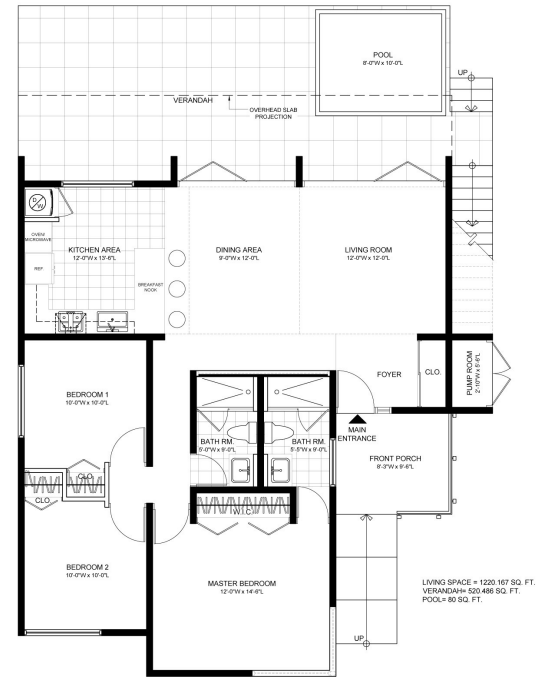


1,820 ft² 3-Bedroom/2-Bath Contemporary Bungalow

1,220 ft²—Interior Living Area, 600 ft² Veranda and Plunge Pool
(+ 252 ft² Roof-Top Sky Lounge) = 2,072 Total Ft²

Canal Front, 3,750 ft² lot (50' x 75') with private boat slip,
and boat access to the Caribbean Sea.

Gated Subdivision—24 Hr. Security Entrance
with Video Surveillance.
Professional Rental Management.
Paved Sand Roads, All City Utilities (Underground).
Private Community with Parks.
Across from Victoria House Resort and 1 mile
from San Pedro Town Center on paved roads.



\$495,000 USD.

**\$100,000 Down Payment
(Just 20% Down!)**

[With approved credit / financing.]

Staged Payment Schedule

- 10% Down Payment
- 15% @ Ground Breaking
- 15% @ Completion of Foundation
- 15% @ 1st Floor Walls Up
- 15% @ Completion of Rough Cement Structure/Roof
- 15% @ Finish Plaster / Doors / Windows
- 15% Due at Completion.

Down Payment: \$100,000 USD

Projected Net Rental Income (*): \$62,342.00 USD (*) - Before Debt Service

Projected Net Profit (After Debt Service): \$ Inquire For Details.

10% Cash Discount (Staged Payments): Save \$49,500- USD.